

PRESS PACK  
**All-new Tayron**



# Contents

## 03 Overview

Overview	03
Fast facts	05

## 06 Package and design

Exterior design	07
Interior design	09

## 11 Engine and running gear

An engine option for everyone	12
Electric driving day-to-day	13
Petrol and diesel reliability	14
4MOTION flexibility	14
Intelligent towing	14

## 15 Technology and assist systems

Standard-fit comfort and safety	16
IQ.LIGHT matrix headlights	17
DCC Pro – adaptive chassis control	17

## 18 Technical data

Tayron eTSI, TSI and TDI engines	18
Tayron eHybrid engines	19

## 20 Standard equipment

Tayron Life	20
Tayron Match	21
Tayron Elegance	22
Tayron R-Line	23
Tayron R-Line Edition	24

## 25 Servicing and warranty

Servicing and warranty	25
------------------------	----

## 26 Volkswagen strategy

ACCELERATE	26
Way to Zero	26

## 27 Media gallery

Tayron	27
--------	----



## Volkswagen UK PR team



**Mike Orford**  
Head of PR & Communications  
07467 442062  
mike.orford@volkswagen.co.uk



**Rob Punshon**  
Corporate & Lifestyle  
Communications Manager  
Tel: 07775 311931  
rob.punshon@volkswagen.co.uk



**Grant McPherson**  
PR Manager  
Tel: 07774 684222  
grant.mcpherson2@volkswagen.co.uk



**Nicki Divey**  
Press Fleet Manager  
Tel: 07802 248310  
nicki.divey@volkswagen.co.uk



**Trevor Rickwood**  
Press Officer  
Tel: 07407 826649  
trevor.rickwood@volkswagen.co.uk

## Plain text version



Download a plain text version of this press kit here: <https://www.vwpress.co.uk/press-kits/1076>

# OVERVIEW



Volkswagen's commanding presence in the UK's dominant SUV sector is strengthened yet further with the arrival (April 2025) of an exciting new model – the five- and seven-seat Tayron.

Offering a compelling mix of practicality, comfort, style and quality, the new Tayron elegantly bridges the gap between the brand's current best-selling model globally – the Volkswagen Tiguan – and its long-established SUV range-topper, the luxurious and capacious Touareg.

Building on the recognised appeal of its popular predecessor the Tiguan Allspace, which it replaces in the Volkswagen UK SUV line-up, the new Tayron brings more space, more comfort, more luxury touches and more drivetrain options than ever before to the family-size SUV segment.

Importantly, the new Tayron is a full seven centimetres longer (4,792 mm) than its Tiguan Allspace forebear, which naturally translates into even more room for passengers in the optional third row of seats, and a

cavernous boot space of up to 705 litres (five-seat version) or 850 litres (seven-seat version, with third row of seats folded down). When all seven seats are in use, the Tayron still offers a respectable 345 litres of boot space, and with all rear seats folded, the seven-seater version manages a huge 1,905 litres of load area (1,915 litres in the five-seat Tayron).

Style matches substance, of course, and the Tayron arrives with striking style inside and out. Design highlights include the sculpted bonnet and slightly squared wheel arches, creating a robust and imposing SUV shape, while high-end features inside include contrast seat stitching and piping, and open-pore wood trim. The Tayron also marks the debut on a non-electric Volkswagen of an illuminated VW logo front and rear for an unmistakable light signature at night.

The German-built Tayron, constructed at the brand's Wolfsburg headquarters where more than 48 million vehicles have been built over the past 87 years – more than any other car factory in the world – arrives in



**The arrival of this five- and seven-seat SUV raises the bar in its class. Fine design, with carefully judged detailing inside and out, is matched by superb practicality and a wide variety of drivetrain options that perfectly emphasise the Tayron's versatility and capability.**



Rod McLeod, Director, Volkswagen UK



the UK with an extensive selection of six engines, each paired with a six- or seven-speed automatic direct-shift gearbox (DSG). While the majority are front-wheel drive, the most potent 2.0 TSI variants are combined with 4MOTION all-wheel drive. The turbo-charged petrol (TSI) or turbodiesel (TDI) units are joined by mild hybrid (eTSI) and plug-in hybrid (eHybrid) options, the latter offering electric-only driving for the vast majority of motorists thanks to an electric range of up to 75 miles (WLTP combined).

Prices for this sophisticated all-rounder, with five or seven seats and enhanced levels of comfort, start from £40,130 (RRP OTR, April 2025) for the Tayron Life 1.5 eTSI. Trims range from Life, through Match and Elegance to the top-of-the-range R-Line and R-Line Edition variants: the latter available for £47,490.



# Fast facts

## All-new Tayron

- » The Tayron develops and refines Volkswagen's presence in a sector created by its predecessor, the Tiguan Allspace. Offering the option of the same seven-seat practicality, the Tayron adds more passenger and luggage space; more comfort, luxury and style; and more of the latest technologies
- » Measuring almost 4.8 m long, the Tayron delivers an unmistakable road presence – day and night. Characterised by a clear, crisp yet striking SUV design, its light signature after dark is just as imposing by virtue of its LED headlights, illuminated Volkswagen badges, 3D tail light clusters and full-length LED crossbar at the rear
- » That stylish exterior is matched by a premium feel in the Tayron's cabin. Design and materials are combined to create a luxurious air of space and comfort, with highlights including the availability of ArtVelours Eco microfibre fabrics, authentic open-pore wood and intricately illuminated decorative trims

## Leaders in technology

- » Sitting on the latest generation of Volkswagen's MQB evo platform, powertrain options in the Tayron are extensive and varied. At launch (April 2025) engines comprise a broad range of turbo-charged petrol (TSI) and turbodiesel (TDI) units, as well as mild hybrids (eTSI) and plug-in hybrids (eHybrid), with power outputs ranging from 150 PS to 272 PS. Each engine is paired with a six- or seven-speed automatic direct-shift gearbox (DSG), and 2.0 TSI variants are combined with 4MOTION all-wheel drive
- » Advanced assist systems abound in the Tayron and include adaptive cruise control (ACC), lane change system (Side Assist), lane keeping system (Lane Assist) and the oncoming vehicle braking when turning function – which helps to avoid collisions when turning across oncoming traffic at junctions. There's also an automatic emergency braking system including pedestrian and cyclist monitoring (Front Assist), Park Assist Plus, a rear-view camera system, dynamic road sign display and Volkswagen's new exit warning system
- » Hi-tech options include Adaptive Chassis Control (DCC Pro) with Driving Mode Selection and new active two-valve shock absorbers, and IQ.LIGHT HD matrix headlights with interactive lighting functions. Also available are Trailer Assist, offered with the folding trailer hitch system, and Volkswagen's advanced IDA voice assistant with ChatGPT integration as part of the Infotainment Package Plus upgrade

## Premium specification

- » Proving that practicality and opulence can go hand-in-hand, the Tayron's luxurious features include the option of a 10-speaker 700 W Harman Kardon sound system with 16-channel digital amplifier. Electrically adjustable perforated leather front seats with ventilation and massage function, plus driver's seat with Smart Comfort entry, are also available

## Volkswagen in the UK

- » Total Volkswagen registrations in the UK in 2024, including passenger-carrying models from Volkswagen Commercial Vehicles, were 166,304. The Tiguan family of models contributed 32,356 to that total in the same period (figures supplied by the Society of Motor Manufacturers and Traders)



# PACKAGE AND DESIGN



- › The Tayron is the largest European Volkswagen SUV based on the globally renowned modular transverse matrix (MQB evo) platform. With a length of 4,792 mm, it is positioned between the Tiguan (4,539 mm) and Touareg (4,902 mm)
- › Dimensions emphasise the Tayron's generous cabin space and supreme flexibility: it measures 4,792 mm long, at least 1,853 mm wide (excluding mirrors) and up to 1,668 mm tall with a wheelbase of almost 2,790 mm
- › The Tayron boasts a distinctive and authentic SUV design, with robust yet harmonious styling that includes a striking night-time light signature with illuminated Volkswagen logos front and rear

## Exterior design: SUV through and through

Measuring almost 4.8 m in length, the Tayron is characterised by a clear, striking SUV design. At the front, high-mounted LED headlights and the standard illuminated Volkswagen badge create an unmistakable light signature as night falls. The same applies at the rear with the new car's full-length LED crossbar and illuminated Volkswagen logo. Sharply drawn lines emphasise the car's premium feel.

A full 25 cm longer than the Tiguan, the Tayron becomes the second largest Volkswagen SUV sold in the UK and Europe, after the Touareg. The design language is, of course, familiar from the new Tiguan, but the car has numerous clever and distinctive design elements that clearly set it apart from its SUV siblings.

### Distinctive and confident

The large sculpted bonnet with its contoured outer edges, alongside the new car's slightly squared wheel arches, give the Tayron a robust, confident SUV style. The dual LED headlights, placed noticeably high up, and the horizontal LED bar, combined with the illuminated Volkswagen logo (appearing for the first time on an internal combustion-engined Volkswagen in Europe) create a distinctive light signature. Like the Tiguan, the Tayron has optional IQ.LIGHT HD matrix headlights derived from the range-topping Touareg.

The front bumper design changes depending on the trim level chosen, with vertical air curtains on the outside of the bumper adorning all versions. The Elegance trim has chrome elements in the 3D radiator grille. The R-Line has a sportier appearance finished in high-gloss while the Tayron R-Line Edition with Black Style package has an additional high-gloss black surface in the lower bumper.

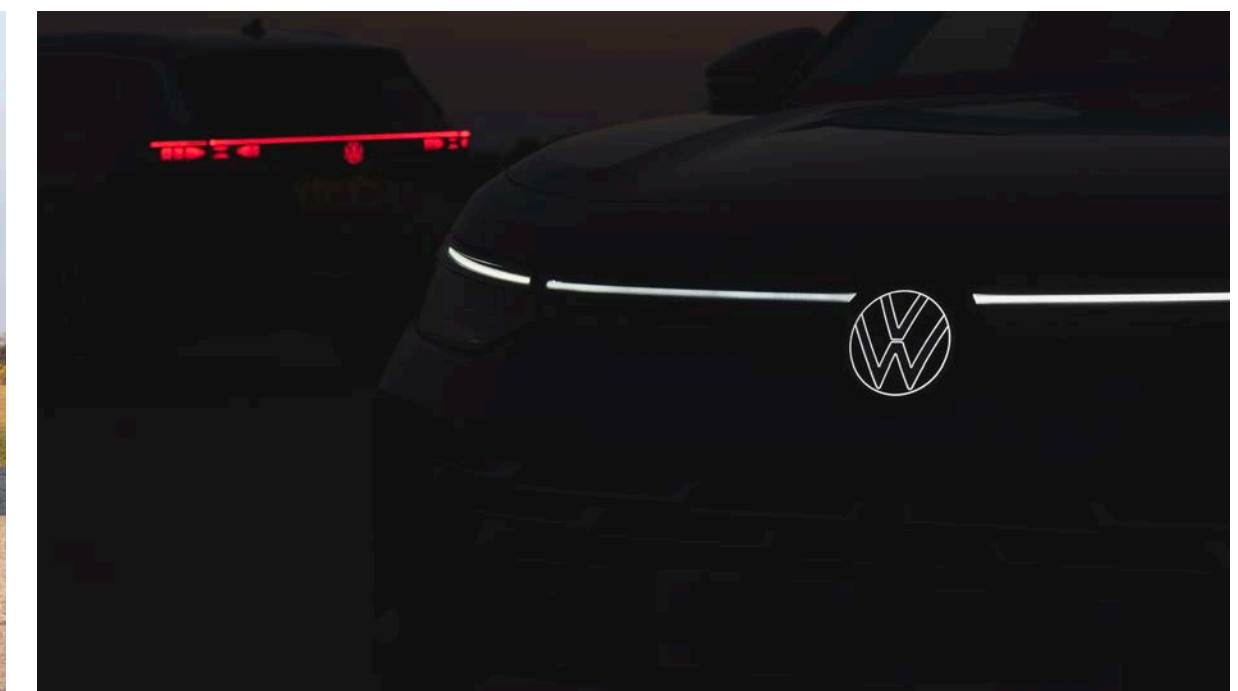
### Striking silhouette

In silhouette, the Tayron is first characterised by the long roof line and eye-catching window graphic extending into the D-pillar. Between the roof and the side windows, chrome elements span the A- to D-pillars.

Nicknamed 'hockey sticks' due to their shape at the rear, these features visually extend the roof and make the Tayron appear lower and more sleek than its 1,668 mm height would suggest. The remaining side surfaces are divided by precise lines, creating striking contours in the silhouette. Starting at the front, a line above the bonnet stretches to create a light edge below the window sill that is continued into the D-pillars.

Below this, a character line creates contours in the side design. This starts in the A-pillar area, incorporates the front door handles into its curve and then rises into the

Among the largest SUVs currently offered by Volkswagen in the UK, the Tayron is characterised by an unmistakable and elegant design style that, with the benefit of clever new features such as the illuminated 'VW' logos front and rear, make the new model instantly recognisable on the road – day or night



rear side doors with a precisely drawn undercut to create a powerful shoulder area at the rear. The undercut flows into the tail light clusters and thus into the rear end. The door surfaces are given sculptural stability through alternating concave and convex surfaces.

With their robust wheel housing trim made from dark plastic, the squared off wheel arches are a dominant feature. Below this there is space for up to 20-inch wheel and tyre combinations and large spring travel when driving off-road. In the lower body area, the side member trims are painted in the vehicle colour to form a continuous unit with the lower front and rear sections. This line also lowers the visual centre of gravity.

### Unmistakably stylish

At the back, the Tayron features a continuous horizontal LED bar, while a narrow LED strip is integrated high up in this bar – extending into the tail light clusters to emphasise the car's width. As it runs towards the middle, this horizontal bar becomes narrower, meaning the lower half of the red-illuminated Volkswagen badge appears to be free-standing. The lighting systems in the top-of-the-range versions of the Tayron are equipped with 'welcome' and 'goodbye' animations, and the driver can choose between three different LED animations for the tail light clusters.



The slightly squared off wheel arches give the Tayron a robust silhouette while differing bumper treatments, depending on the trim level chosen, and stylish new alloy wheel designs contribute to a coherent and imposing look for this new five- or seven-seat SUV



**The new Tayron is an SUV designed and built without compromise. Space for as many as seven occupants sits alongside eye-catching exterior styling, while ingenious interior features such as Atmospheres generate an ambience that exudes comfort and luxury.**



David Hanna, Head of Network Sales, Volkswagen UK

## Interior design: space, comfort and a connected cockpit

The new Tayron's interior is a compelling mix of high-quality materials, clear and stylish design, and a connected cockpit landscape that is augmented, crucially, by generous space for driver, passengers and luggage. The drive for a high-quality environment is immediately apparent as all Tayron versions feature soft leatherette in the dash panel area, front upper door panels, door inserts and centre console. Depending on the trim level, these surfaces are refined further with piping and fine contrasting seams. In the dash panel area and door inserts, the Tayron R-Line has large areas finished in ArtVelours Eco, styling that is usually reserved for Volkswagen's exclusive sports cars. Like the Touareg, genuine open-pore wood trims are used in the Tayron Elegance, while the Tayron R-Line features high-quality aluminium-look trims in the same locations. The seat cushions of the top trim levels are also upholstered in ArtVelours Eco fabric as standard.

The dash panel features a full-width horizontal architecture that, for the driver, is dominated by the Digital Cockpit Pro – digital instruments with a display diagonal of 260 mm (10.25 inches). Gear selections in the DSG-only Tayron are performed via an intuitive steering column switch. The visually free-standing touchscreen infotainment system is naturally found in the centre of the dash panel and the display for the standard audio system (including mobile phone interface, Apple CarPlay and Android Auto) measures 320 mm (12.9 inches) across the diagonal, while the Discover and larger Discover Pro Max (display with 380-mm/15-inch diagonal) navigation packages are optionally available. Irrespective of the display size, the settings for the air conditioning, seat air

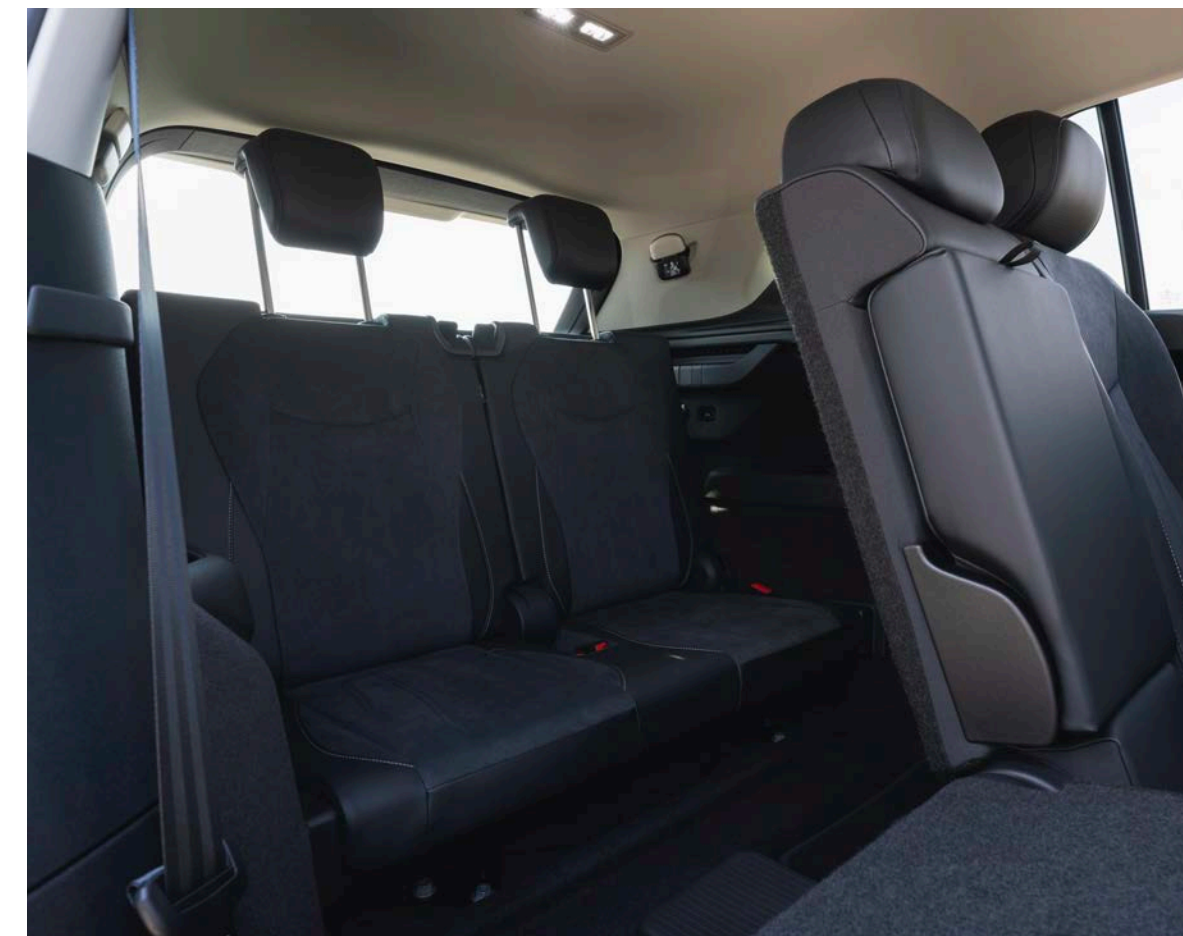
conditioning and the home button for menu navigation are always located in the fixed bottom bar of the screen. A separate level contains the illuminated touch sliders for temperature control and audio volume. Alternatively, the latter can be adjusted using buttons on the multi-function steering wheel, the IDA voice assistant or the driving experience control between the driver and front passenger seats.

Standard across the range, the multi-function driving experience control provides, in addition to audio volume, regulation of the driving profiles, the all-wheel drive system (if fitted) and the preconfigured Atmospheres. In these Atmospheres, the settings for the standard 10-colour background lighting (optionally available with 30 colours) and the audio system, including the optional 700-W Harman Kardon system, merge to create a wide range of lighting and audio moods. Playlists from Spotify, perfectly matched to the respective Atmospheres, can also be included. The various Atmospheres – Lounge, Energetic, Joy, Minimal and Me – all feature different and distinct characteristics. So, while Lounge is characterised by muted colours, quiet sounds and classical music, Energetic has more colour, the sounds are louder and the playlist is more lively.

### ergoActive Plus seats with massage function and air conditioning

Elegance and R-Line buyers gain Volkswagen's impressive ergoActive seat on the driver side, while those opting for the leather package also benefit from the addition of ergoActive Plus seats for driver and front passenger. These seats include electric 14-way adjustment with

A light, airy and of course spacious cabin is the trademark interior feature for the Tayron, with high-quality trims and the latest Volkswagen technologies combining to deliver a driver and passenger experience that is as comfortable and convenient as it is practical



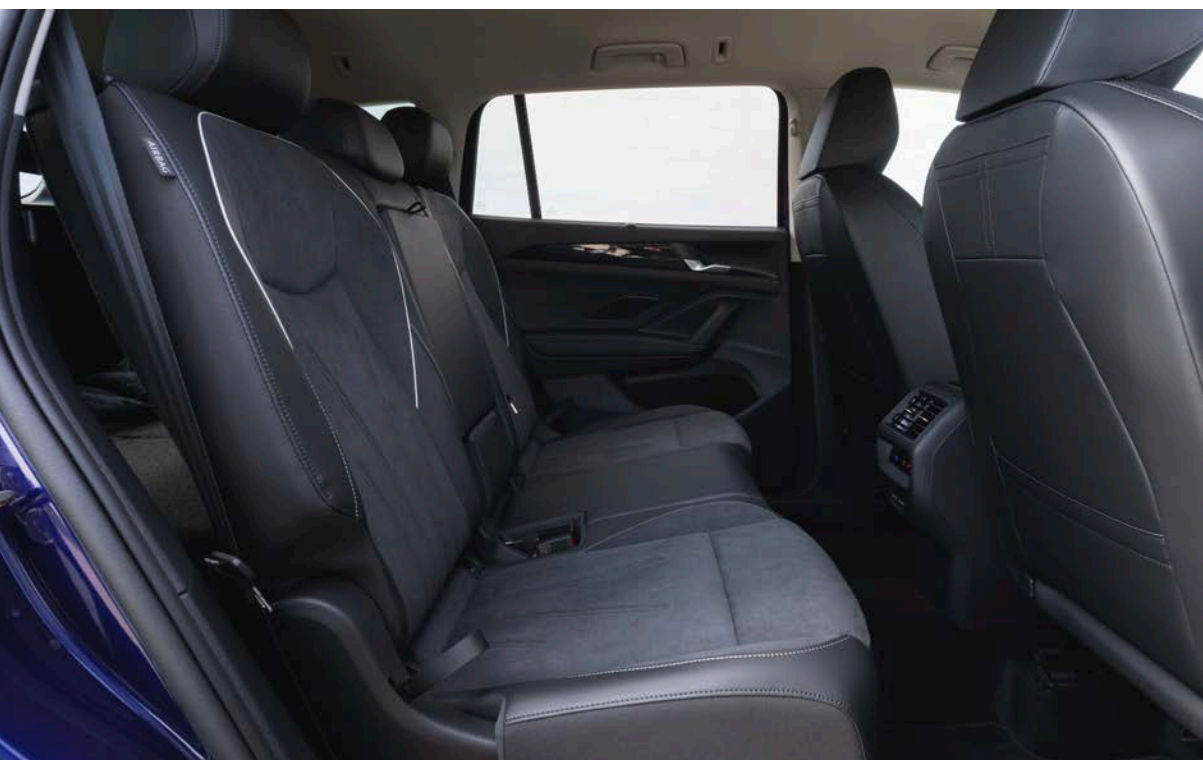
memory function, seat depth adjustment, a pneumatic four-way lumbar support adjustment and a pneumatic 10-chamber pressure point massage in the backrests. The luxurious ergoActive Plus seats also offer automatic activation of seat heating and ventilation, as required. Opting for this pack also means the leather multi-function steering wheel gains a heating function.

The Tayron's second-row seats feature backrest angle and longitudinal adjustment and can be folded in a 1/3 to 2/3 split, while rear passengers enjoy luxury-class legroom as standard. If the centre seat is free, a centre armrest can be folded out which offers two cup holders. This extension can be swivelled left or right, and has a joint at the front where tablets and smartphones can be locked in place. If the Tayron has been configured as a seven-seater (not available in conjunction with the plug-in hybrid option), the second row of seats can be folded forwards with the convenient entry function allowing easy access to the third row of seats. When not in use, these two rearmost seats can be folded down flat.

**Making space count**

This new Volkswagen SUV naturally optimises the use of interior space, with flexibility its watchword. The load compartment of the seven-seat Tayron eTSI, TSI and TDI versions offers up to 850 litres of luggage space, while five-seat eHybrids have 705 litres of space (loaded up to the backrest height of the second row of seats). If the Tayron is loaded to behind the backrests of the first row of seats, the load volume increases to as much as 1,915 litres.

The Tayron's cockpit is a clever mix of the latest digital instruments and controls, allied to traditional buttons where appropriate, giving the driver the ideal mix of information and assistance, while the load bay of up to 1,915 litres underlines this SUV's flexibility



# ENGINES AND RUNNING GEAR



- › At launch (April 2025) Tayron engine options range from turbocharged petrol (TSI) and turbodiesel (TDI) units, through hi-tech mild hybrid (eTSI) and plug-in hybrid (eHybrid) configurations that represent an exceptional choice in the five-/seven-seat SUV class
- › Power at launch peaks at 272 PS (200 kW), and the latest iteration of Volkswagen's famous EA888 2.0-litre turbocharged petrol engine delivers performance with a 0-62 mph time of 6.1 seconds
- › eHybrid versions of the Tayron are capable of an all-electric range in excess of 70 miles between charges (WLTP) making them, effectively, entirely electric cars for the majority of journeys



## Driving choice and efficiency

### An engine option for everyone

Volkswagen offers the new Tayron in the UK from launch (April 2025) with a huge range of engine and drivetrain options that extend across the full breadth of current internal combustion configurations, from turbocharged petrol (TSI) and turbodiesel units (TDI) to a mild hybrid drive (eTSI), and two plug-in hybrid drives (eHybrid). Power outputs range from 150 PS (110 kW) to 272 PS (200 kW), and all are paired with a six- or seven-speed direct-shift gearbox (DSG) as standard. The two turbocharged petrol engines feature 4MOTION all-wheel drive, while all other Tayron versions have a front-wheel drive configuration.

Regardless of power output, all of the Tayron's engine offerings are among the most advanced yet provided by Volkswagen. The entry-level engine, for instance – a 1.5 TSI evo2 – is actually a mild hybrid comprising a four-cylinder turbocharged petrol engine and 48-volt battery with a system output of 150 PS (110 kW). Peak torque of 250 Nm arrives across a wide rev range, from just 1,500 rpm up to 3,500 rpm, and this petrol engine uses advanced technical features such as the highly efficient TSI evo combustion process and a turbocharger with variable turbine geometry (VTG) turbocharger, the latter being a feature more commonly found in sports cars. It is also equipped with ACTplus Active Cylinder Management, meaning two of the engine's four cylinders switch off as often as possible to further conserve fuel. The second and third cylinders are designed to be taken out of the fuel supply at low and medium loads and speeds. When the throttle is opened, they immediately activate again.

Meanwhile, the eTSI is coupled with a 48-volt lithium-ion battery and a 48-volt belt starter generator that temporarily provides 14 kW of power and 56 Nm of torque. The electrical energy used is recovered via recuperation – meaning it is harvested during



A huge range of drivetrain options – from mild and plug-in hybrids to turbocharged petrol and turbo diesel units – ensures the Tayron arrives (April 2025) with an engine solution for everyone. All benefit from the use of a six- or seven-speed direct-shift gearbox



deceleration and braking. The additional power from the 48-volt system acts like a booster, optimising the initial performance of the Tayron eTSI. At the same time, the energy stored in the battery enables the 1.5 TSI evo2 to be switched off at times and thus allows coasting, together delivering excellent fuel efficiency.

### Electric driving day-to-day

A new generation of Volkswagen's cutting-edge plug-in hybrid drive is used in the Tayron, bringing generous electric ranges and maximised efficiency. The Tayron eHybrid is available in two outputs: 204 PS (150 kW) and 272 PS (200 kW). Thanks to their efficiency and battery size, both plug-in hybrid models achieve impressive electric ranges. Depending on trim, wheel and tyre sizes, the 204 PS Tayron eHybrid can cover up to 75 miles (WLTP). The potent 272 PS eHybrid has an electric range of 71 miles (WLTP). Such impressive ranges mean that, for many owners, these Tayron models are capable of operating as purely electric cars day-to-day. Meanwhile, the plug-in hybrid drives also support huge combined ranges of about 560 miles between refuelling stops. The maximum towing capacity of the 204 PS Tayron eHybrid is 1,800 kg, while the 272 PS Tayron eHybrid can pull a maximum trailer weight of 2,000 kg (braked on a 12-per-cent gradient).

The plug-in hybrid drives in the Tayron comprise a 19.7 kWh (net) lithium-ion battery, a power electronics system, the four-cylinder turbocharged engine (1.5 TSI evo2) and a hybrid module (electric drive motor plus six-speed eDSG). The battery can be charged with up to 11 kW of AC electricity or – as with an electric car – at DC quick-charging stations with up to 40 kW. The direct current stored in the battery is converted into the alternating current needed by the electric drive motor via a power electronics system. Like the version of the engine used in the eTSI, the 1.5 TSI evo2 is characterised by hi-tech features such as the TSI evo combustion process and a VTG turbocharger.



**Maximising drivetrain choice is a key feature of the Tayron, and I'm confident that with the range of engine, gearbox and drive configurations available, there really is something for everyone here. From high-performance TSI 4MOTION versions to eHybrid plug-in electric options – and everything in between – this new SUV has a configuration to suit every need.**



**Hannah Doherty, Product Manager, Volkswagen UK**



The Tayron eHybrid, with its latest-generation plug-in hybrid drive in either 204 PS or potent 272 PS guise, offers a range that, for many, will mean purely electric driving day-to-day is now the norm



## Turbocharged petrol and turbodiesel reliability

The latest iteration of Volkswagen's EA888 four-cylinder turbocharged petrol engine is used in both performance versions of the all-wheel drive Tayron TSI 4MOTION. Offered here in its fourth generation, this EA888 unit also powers Volkswagen icons such as the Golf GTI. Provided in one of two power outputs, 204 PS (150 kW) and 265 PS (195 kW), in either guise the 2.0-litre TSI is notable for its flexibility and refinement. Peak torque figures of 320 Nm (1,500 to 4,400 rpm) or 400 Nm (1,650 to 4,350 rpm) help the Tayron deliver lively acceleration befitting of its sporty R-Line trim level, with the higher-output engine helping this seven-seat SUV to a 0-62 mph dash time of only 6.1 seconds (7.4 seconds for the 204 PS car). Both TSI versions are designed for large towing capacities of up to 2,400 kg (braked with 12-per-cent gradient) in conjunction with the standard all-wheel drive. Both feature a seven-speed DSG as standard, too.

Alternatively, a modern 2.0-litre turbodiesel (TDI) engine from the EA288 evo series is on offer in the Tayron, with 150 PS (110 kW) and 360 Nm available. Driving the front axle, it is coupled to an SCR catalytic converter and

features a seven-speed DSG. The engine develops its maximum torque of 360 Nm between 1,600 and 2,750 rpm, and endows the Tayron with a maximum towing capacity of 2,000 kg (braked with 12-per-cent gradient). Economy is impressive, too, with a WLTP combined figure of 51.4 mpg and CO<sub>2</sub> emissions of 145 g/km for the Tayron Life TDI.

## 4MOTION flexibility

The 4MOTION all-wheel drive system in the Tayron uses a sixth-generation multiplate clutch for power transmission to the rear axle, and features intelligent drive management to maximise traction and efficiency. Under normal driving conditions, such as when the car is in the city, on dry roads, and without a maximum load, the engine's output is routed solely to the front axle. The rear axle is driven using the 4MOTION clutch and propshaft only if the load requirement grows, there is increased lateral acceleration or a wheel is at risk of losing grip. The all-wheel drive can also be activated manually via the Driving Experience Control to ensure all-wheel drive is permanently activated for the duration of the trip. This could be necessary when driving on snow, for instance. In addition to the Eco, Comfort, Sport and Individual profiles, the Offroad and Snow all-wheel drive profiles are available for the 4MOTION models.

## Intelligent towing

Tayron TSI models are approved for high trailer weights of up to 2,400 kg (braked with a 12-per-cent gradient). The Tayron 4MOTION automatically activates the Trailer Driving Profile to optimise the distribution of power between the front and rear axles when a trailer is attached. If the car is ordered with the ball coupling that can be folded out semi-automatically, the Trailer Assist trailer manoeuvring system is also included. This handy system automatically controls the steering angle of the trailer when reversing via active steering intervention.



Those who opt for a 4MOTION (all-wheel drive) Tayron will benefit from intelligent drive management to maximise both traction and efficiency, even in the most challenging of road conditions. Meanwhile trailer towing weights of up to 2,400 kg (braked, 12 per cent gradient) further support this new Volkswagen SUV's practical attributes

# TECHNOLOGY AND ASSIST SYSTEMS



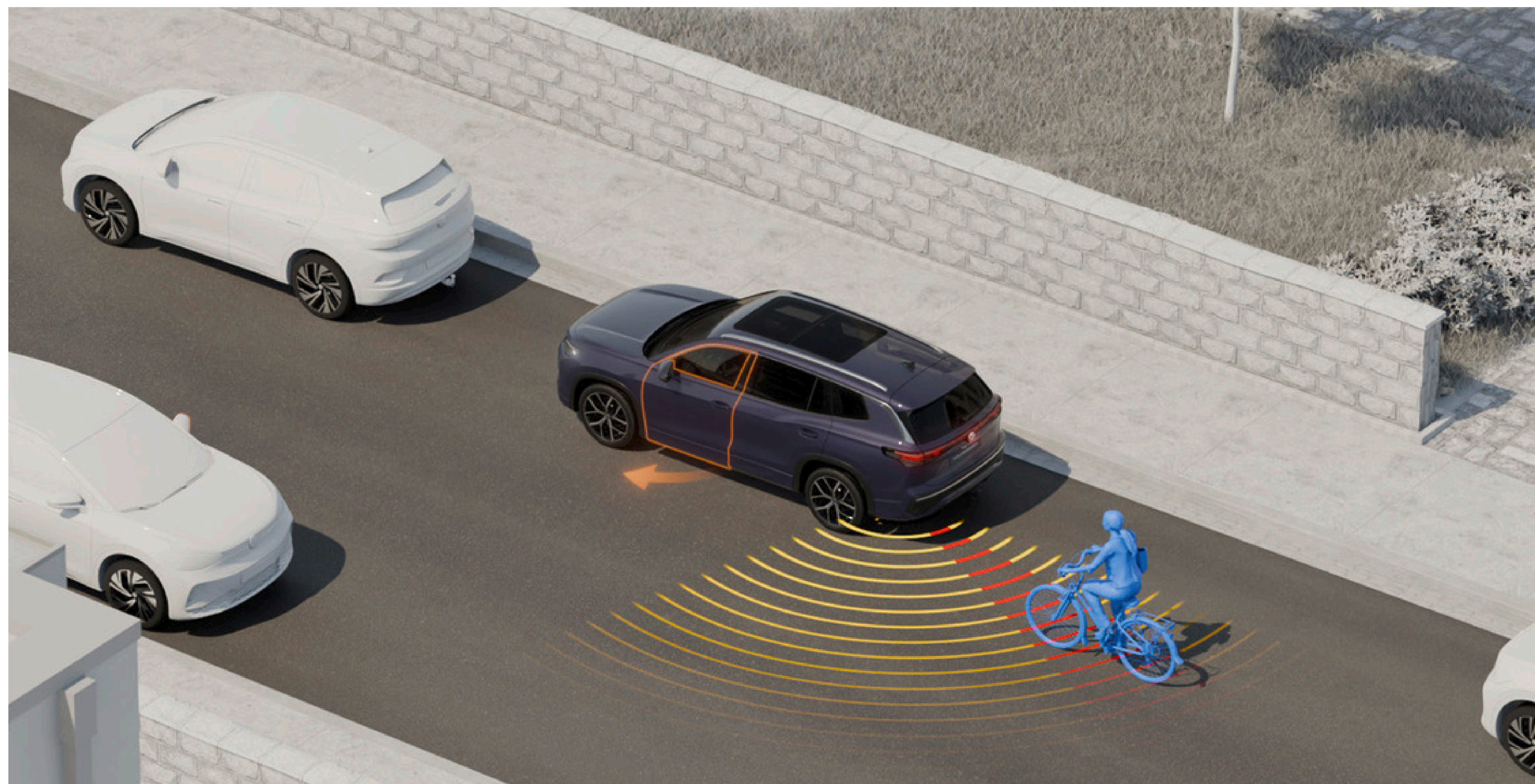
- › The Tayron debuts (April 2025) with a generous selection of advanced Volkswagen technologies fitted as standard, including LED headlights, Digital Cockpit Pro and advanced Air Care Climatronic air conditioning
- › Safety and assist systems abound, too, with the likes of adaptive cruise control, Front Assist and dynamic road sign display common across all models
- › Advanced options include Volkswagen's cutting-edge IQ.LIGHT HD matrix headlights and the latest generation of the brand's exceptional adaptive chassis control system – DCC Pro

## Standard-fit comfort and safety

From the entry-level Life model up, it is clear that a high level of advanced technology appears as standard in every new Tayron. Features that underscore the car's style and comfort include LED headlights with automatic main beam control (Light Assist) plus an LED light strip between the headlights, striking 3D LED tail light clusters with a continuous horizontal LED bar and illuminated Volkswagen badges front and rear; there's also 18-inch Napoli alloy wheels with diamond-cut finish and contrasting high-gloss black paint. Meanwhile, inside, three-zone automatic air conditioning with innovative air cleaning function (Air Care Climatronic), ambient lighting (10 colours), the multi-function driving experience control in the centre console, an infotainment system with large touchscreen (12.9-inch screen diagonal), App-Connect Wireless (wireless integration of Apple CarPlay and Android Auto), and digital instruments (Digital Cockpit Pro) emphasise the car's quality and appeal.

More than this, though, all new Tayron models benefit from an extensive array of safety and assist systems. The spectrum of technologies that are standard across the entire range at launch (April 2025) includes adaptive cruise control, the emergency braking system Front Assist including pedestrian and cyclist monitoring, and an exit warning system which, within system limits, warns of a potential risk from cyclists when an inside door handle is activated. There's also oncoming vehicle braking when turning – which helps to avoid collisions when turning across oncoming traffic at junctions – the Side Assist lane change system, Lane Assist lane keeping system, semi-automatic parking system Park Assist Plus, rear-view camera and dynamic road sign display..

Meanwhile, systems primarily dedicated to safety are also comprehensive from Life trim up. In addition to the front and front-side airbags, as well as a centre airbag between the front seats, there are curtain and side airbags in the rear. In all, nine airbags are integrated in the Tayron while ISOFIX retaining rings on the outer rear seats and on the front passenger seat allow child seats to be securely fixed.



The latest generation of Volkswagen assist systems forms a key part of the new Tayron's safety features. Among the many highlights are a pedestrian and cyclist monitoring and an exit warning system which, within system limits, warns of a potential risk from cyclists when an inside door handle is activated





## Extra help on offer

While the Tayron's range of standard-fit safety and assist systems is undeniably extensive, Volkswagen offers a wide selection of upgrades. The Comfort Package, for instance, enhances parking support with the addition of Park Assist Pro including Distance Control. Park Assist enables assisted parking in parallel or bay parking spaces, with the Tayron taking control of acceleration, braking and steering. When the memory function is active, the system records the final 50 metres driven and, thus, the car's parked position. When the Tayron reaches this starting position again, it automatically offers to take over parking. Up to five parking manoeuvres can be stored and, in conjunction with the Volkswagen Park Assist Pro app, the remote function allows the Tayron to be driven into and out of parking spaces using a smartphone outside the vehicle as a remote control.

## IQ.LIGHT HD matrix headlights

Another optional enhancement that brings cutting-edge technology to the fore, literally, are the IQ.LIGHT HD matrix headlights. HD, standing for high definition, means in this context a high-resolution light source. When specified, this addition to the Tayron means that in each headlight, 19,200 multipixel LEDs illuminate the road and the surrounding area to an unprecedented level – improving both night-time driving comfort and safety. Each of the headlights comprises three modules: a bi-matrix module for the main beam background matrix, the HD matrix module with its 19,200

individually controllable LEDs, and a projection module for the static cornering light and the poor weather light. These sophisticated headlights can also project a 'carpet' of light on to the lane ahead, known as Lane Light. This, in particular, makes driving at night more comfortable because the bright light carpet follows the road ahead precisely.

## DCC Pro – adaptive chassis control

A sophisticated damping control system governs the Tayron's ride and handling. The DCC Pro adaptive chassis control – a standard feature on certain trim and engine combinations – reacts to road conditions and the car's driving situation, and analyses parameters such as steering, braking and acceleration to calculate the ideal damping for each wheel – adjusting shock absorbers within fractions of a second. The driver also has the option of individually adjusting the DCC Pro system via settings ranging from very comfortable to very sporty. In the Tayron, the new generation of DCC is distinguished most notably by new two-valve shock absorbers. Also new is the control algorithm for separate rebound and compression control. The fast two-valve shock absorbers enable an even better connection to be achieved between the car's body and chassis, while at the same time enhancing driving dynamics. The lateral dynamics components of the adaptive chassis control are governed by the Tayron's vehicle dynamics manager, which also coordinates the functions of the electronic differential locks (EDL plus XDS+) and, where present, the 4MOTION all-wheel drive.



With ride and handling tuned to deliver an engaging mix of comfort and dynamism, the new Tayron is a compelling drive in all circumstances. Meanwhile the optional IQ.LIGHT HD matrix headlights use 19,200 multipixel LEDs per light to provide exceptional illumination at night

# Technical data: Tayron

## Tayron eTSI, TSI and TDI engines

	<b>Tayron 1.5 eTSI 150 PS 7-spd DSG</b>	<b>Tayron 2.0 TSI 204 PS 7-spd DSG</b>	<b>Tayron 2.0 TSI 265 PS 7-spd DSG</b>	<b>Tayron 2.0 TDI 150 PS 7-spd DSG</b>
Max power	150 PS (110 kW)	204 PS (150 kW)	265 PS (195 kW)	150 PS (110 kW)
Max torque	250 Nm	320 Nm	400 Nm	360 Nm
Engine type	Turbocharged petrol, mHEV 4-cylinder, 1,498 cc	Turbocharged direct injection petrol, 4-cylinder, 1,984 cc	Turbocharged direct injection petrol, 4-cylinder, 1,984 cc	Turbo diesel, 4-cylinder, 1,968 cc
Gearbox	7-spd DSG	7-spd DSG	7-spd DSG	7-spd DSG
Drive type	Front-wheel drive	4MOTION all-wheel drive	4MOTION all-wheel drive	Front-wheel drive
Top speed	127 mph	139 mph	149 mph	129 mph
Acceleration (0-62 mph)	9.4 seconds	7.4 seconds	6.1 seconds	9.7 seconds
Consumption mpg (WLTP combined)	44.1 (R-Line 42.9)	35.8	32.5	51.4 (Life, Elegance 50.9, R-Line 49.5)
CO <sub>2</sub> emissions g/km (WLTP combined)	146 (R-Line 250)	180	195	145 (R-Line 150)
Height	1,668 mm	1,665 mm	1,665 mm	1,668 mm
Width (exc mirrors)	1,853 mm (R-Line 1,866 mm)	1,866 mm	1,866 mm	1,853 mm (R-Line 1,866 mm)
Length	4,792 mm	4,792 mm	4,792 mm	4,792 mm
Wheelbase	2,788 mm	2,789 mm	2,789 mm	2,788 mm
Boot capacity - to height of rear bench	850 litres	850 litres	850 litres	850 litres
Maximum trailer weight (braked, 12%)	1,800 kg	2,400 kg	2,400 kg	2,000 kg
Turning circle	12.1 m	12.1 m	12.1 m	12.1 m



# Technical data: Tayron

## Tayron eHybrid engines

	Tayron eHybrid 1.5 TSI 204 PS 6-spd DSG	Tayron eHybrid 1.5 TSI 272 PS 6-spd DSG
Max power	204 PS (150 kW)	272 PS (200 kW)
Max torque	250 Nm	250 Nm
Engine type	Electric drive motor plus turbocharged direct injection petrol, 4-cylinder, 1,498 cc	Electric drive motor plus turbocharged direct injection petrol, 4-cylinder, 1,498 cc
Gearbox	6-spd DSG	6-spd DSG
Drive type	Front-wheel drive	Front-wheel drive
Top speed	130 mph	134 mph
Acceleration (0-62 mph)	8.6 seconds	7.3 seconds
Battery capacity (net)	19.7 kWh	19.7 kWh
Electric-only range (WLTP combined)	Life, Elegance up to 76 miles	R-Line 73 miles R-Line Edition 72 miles
Consumption mpg (WLTP combined)	Life 696, Match 664.8, Elegance 698.7, R-Line 614.4, R-Line Edition 592.6	R-Line 625.9 R-Line Edition 608
CO <sub>2</sub> emissions g/km (WLTP combined)	Life 9, Match 10, Elegance 9, R-Line 10, R-Line Edition 11	Life 9, Match 10, Elegance 9, R-Line 10, R-Line Edition 11
Height	1,666 mm	1,666 mm
Width (exc mirrors)	1,853 mm (R-Line 1,866 mm)	1,866 mm
Length	4,792 mm	4,792 mm
Wheelbase	2,789 mm	2,789 mm
Boot capacity – to height of rear bench	705 litres	705 litres
Maximum trailer weight (braked, 12%)	1,800 kg	2,000 kg
Turning circle	12.1 m	12.1 m



# Standard equipment

## Tayron Life

[See the Volkswagen website for current price](#)

### Alloy wheels and suspension

- 18-inch Napoli black diamond-turned alloy wheels
- Anti-theft wheel bolts
- 235/55 R18 tyres
- Tool kit and tyre mobility set: 12-volt compressor and tyre sealant

### Exterior

- Automatic headlight control with LED daytime running light and coming home/leaving home feature
- Black roof rails
- Body-coloured exterior mirror housings and door handles
- Chrome mouldings on side windows
- Cornering light and poor weather light
- Illuminated Volkswagen logos front and rear
- Heat-insulating glass in side and rear windows
- Laminated safety glass windscreen, heat insulating
- LED headlamps
- Rear combination lamps with special signal pattern
- Rear fog light on one side, reversing light on both sides
- Surround lighting with welcome light
- Two-tone horn

### Interior

- 12-volt socket in centre console, in rear and in luggage compartment
- Auto-dimming rear-view mirror
- Carpet mats, front and rear
- Centre console with illuminated storage compartment with sliding cover and two drinks holders
- Comfort seats in front
- Flat luggage compartment floor
- Front centre armrest
- Front seats with manual height adjustment
- Interior ambient lighting with 10 colour options
- Leather-wrapped multi-function steering wheel with shift paddles
- Mechanical rear seat release
- Power-assisted steering, speed sensitive

- Power-adjustable lumbar support in front seats
- Seven-seat versions: rear seat bench/backrest, split folding with centre armrest and two seats in third row of seats
- Five-seat versions: rear seat bench, split folding, longitudinally moveable and folding with load-through hatch (eHybrid only)
- Seat trim covers in fabric
- Sun visors with illuminated vanity mirrors

### In-car entertainment and communications

- 12.9-inch infotainment display
- Two USB-C ports in the front, two USB-C charging sockets on the centre console in rear, charging capacity up to 45 W
- Eight speakers
- Digital Cockpit Pro – 10.25-inch high-resolution dash display screen with customisable menus and information
- Digital radio reception (DAB)
- Diversity antenna for FM reception
- E-sim card for online connectivity
- Inductive smartphone charging
- Navigation system
- Voice activation – spoken word commands for telephone and navigation system
- Wireless App-Connect

### Safety and security

- E-call emergency call service
- Three-point seat belts in front with seat belt pretensioners
- Three-point seat belts, outer rear with ECE label
- Alarm with interior protection
- Keyless Go central locking system
- Curtain and side airbags in front and rear, centre airbag
- Disc brakes front and rear
- Driver and front passenger airbag with front passenger airbag deactivation
- First-aid kit with warning triangle and safety vest
- ISOFIX anchors for child seats on outer rear seats and front passenger seat, compatible with i-Size
- Safety-optimised front head restraints
- Tailgate unlocking from outside
- Three or five rear head restraints
- Tyre pressure loss indicator
- Warning signal and warning light for front and rear seat belts not fastened

### Driver assistance

- Adaptive cruise control (ACC)
- Driver attention monitor and driver alert system
- Driving profile selection
- Dynamic headlight range control
- Dynamic road sign display
- Electronic parking brake with auto-hold function
- Front Assist – autonomous emergency braking with pedestrian and cyclist monitoring
- Front-wheel drive
- High Beam Assist, automatic sensing for switching between dipped and main beam
- Hill Start Assist
- Lane change system Side Assist, Rear Traffic Alert and exit warning system
- Lane keeping system Lane Assist
- Multi-function front-facing camera for distance control
- Oncoming vehicle braking when turning, including swerve support
- Park Assist Plus with Park Distance Control
- Rear-view camera system
- Start-stop system with battery regeneration (recuperation – energy recovery during braking)
- Charging cable mode 3, type 2/3, 16 A
- Charging cable mode 2, type 2 / G (10 A)
- Adaptive Chassis Control DCC Pro including driving mode selection

### Comfort and convenience

- Remote electrically foldable door mirrors, puddle lights and reverse-activated passenger door mirror
- Three-zone Air Care Climatronic air conditioning control panel

### Options

Full option information is available on the Volkswagen UK online configurator:

[https://www.volkswagen.co.uk/en/configurator.html/\\_app/31150](https://www.volkswagen.co.uk/en/configurator.html/_app/31150)

All prices listed are manufacturer's on-the-road recommended retail price (includes VAT, VED, delivery to Retailer, number plates and first registration fee). Volkswagen may change RRP's at any time (this includes where there are Government changes in regulation and/or legislation). Vehicle specification may vary as Volkswagen UK reviews the model range line-up throughout the year. Buyers are advised to clarify exact vehicle specification and price with a Volkswagen Retailer at the point of order.

All equipment details, prices (including 20 per cent VAT) and power specifications apply to the model range offered in the UK. Figures in this media pack are correct at the time of publication (April 2025).



# Standard equipment

## Tayron Match

[See the Volkswagen website for current price](#)

### Alloy wheels and suspension

- 18-inch Bologna diamond-turned alloy wheels
- Anti-theft wheel bolts
- 235/55 R18 tyres
- Tool kit and tyre mobility set: 12-volt compressor and tyre sealant

### Exterior

- Laminated safety glass from B-pillar backwards, 90-per-cent tinted
- Silver roof rails
- Automatic headlight control with LED daytime running light and coming home/leaving home feature
- Body-coloured exterior mirror housings and door handles
- Chrome mouldings on side windows
- Cornering light and poor weather light
- Illuminated Volkswagen logos front and rear
- Heat-insulating glass in side and rear windows
- Laminated safety glass windscreen, heat insulating
- LED headlamps
- Rear combination lamps with special signal pattern
- Rear fog light on one side, reversing light on both sides
- Surround lighting with welcome light
- Two-tone horn

### Interior

- 12-volt socket in centre console, in rear and in luggage compartment
- Auto-dimming rear-view mirror
- Carpet mats, front and rear
- Centre console with illuminated storage compartment with sliding cover and two drinks holders
- Comfort seats in front with manual height adjustment
- Flat luggage compartment floor
- Front centre armrest
- Interior ambient lighting with 10 colour options
- Leather-wrapped multi-function steering wheel with shift paddles
- Mechanical rear seat release

- Power-assisted steering, speed sensitive
- Power-adjustable lumbar support in front seats
- Seven-seat versions: rear seat bench/backrest, split folding with centre armrest and two seats in third row of seats
- Five-seat versions: rear seat bench, split folding, longitudinally moveable and folding with load-through hatch (eHybrid only)
- Seat trim covers in fabric
- Sun visors with illuminated vanity mirrors
- Tayron Match (continued)

### In-car entertainment and communications

- 12.9-inch infotainment display
- Two USB-C ports in the front, two USB-C charging sockets on the centre console in rear, charging capacity up to 45 W
- Eight speakers
- Digital Cockpit Pro – 10.25-inch high-resolution dash display screen with customisable menus and information
- Digital radio reception (DAB)
- Diversity antenna for FM reception
- E-sim card for online connectivity
- Inductive smartphone charging
- Navigation system
- Voice activation – spoken word commands for telephone and navigation system
- Wireless App-Connect

### Safety and security

- E-call emergency call service
- Three-point seat belts in front with seat belt pretensioners
- Three-point seat belts, outer rear with ECE label
- Alarm with interior protection
- Keyless Go central locking system
- Easy open and close – electric tailgate with virtual pedal activation
- Curtain and side airbags in front and rear, centre airbag
- Disc brakes front and rear
- Driver and front passenger airbag with front passenger airbag deactivation
- First-aid kit with warning triangle and safety vest
- ISOFIX anchors for child seats on outer rear seats and front passenger seat, compatible with i-Size
- Safety-optimised front head restraints
- Tailgate unlocking from outside

- Three or five rear head restraints
- Tyre pressure loss indicator
- Warning signal and warning light for front and rear seat belts not fastened

### Driver assistance

- Memory feature for Park Assist
- Park Assist Pro with Park Distance Control
- Adaptive cruise control (ACC)
- Driver attention monitor and driver alert system
- Driving profile selection
- Dynamic headlight range control
- Dynamic road sign display
- Electronic parking brake with auto-hold function
- Front Assist – autonomous emergency braking with pedestrian and cyclist monitoring
- Front-wheel drive
- High Beam Assist, automatic sensing for switching between dipped and main beam
- Hill Start Assist
- Lane change system Side Assist, Rear Traffic Alert and exit warning system
- Lane keeping system Lane Assist
- Multi-function front-facing camera for distance control
- Oncoming vehicle braking when turning, including swerve support
- Rear-view camera system
- Start-stop system with battery regeneration (recuperation – energy recovery during braking)
- Charging cable mode 3, type 2/3, 16 A
- Charging cable mode 2, type 2 / G (10 A)
- Adaptive Chassis Control DCC Pro including driving mode selection

### Comfort and convenience

- Tilting and sliding panoramic sunroof with rear panoramic sunroof
- Remote electrically foldable door mirrors, puddle lights and reverse-activated passenger door mirror
- Interior ambient lighting with 10 colour options
- Three-zone Air Care Climatronic air conditioning control panel

### Options

Full option information is available on the Volkswagen UK online configurator:

[https://www.volkswagen.co.uk/en/configurator.html/\\_\\_\\_app/31150](https://www.volkswagen.co.uk/en/configurator.html/___app/31150)

All prices listed are manufacturer's on-the-road recommended retail price (includes VAT, VED, delivery to Retailer, number plates and first registration fee). Volkswagen may change RRP's at any time (this includes where there are Government changes in regulation and/or legislation). Vehicle specification may vary as Volkswagen UK reviews the model range line-up throughout the year. Buyers are advised to clarify exact vehicle specification and price with a Volkswagen Retailer at the point of order.

All equipment details, prices (including 20 per cent VAT) and power specifications apply to the model range offered in the UK. Figures in this media pack are correct at the time of publication (April 2025).



# Standard equipment

## Tayron Elegance

[See the Volkswagen website for current price](#)

### Alloy wheels and suspension

- 19-inch Catania black diamond-turned alloy wheels
- Anti-theft wheel bolts
- 235/50 R19 tyres
- Tool kit and tyre mobility set: 12-volt compressor and tyre sealant

### Exterior

- Body-coloured bumpers, air intake with chrome trim
- LED headlamps with LED separate signature running light and dynamic cornering light
- Illuminated Volkswagen logo front and rear, with animation
- Laminated safety glass from B-pillar backwards, 90-per-cent tinted
- Automatic headlight control with LED daytime running light and coming home/leaving home feature
- Body-coloured exterior mirror housings and door handles
- Chrome mouldings on side windows
- Cornering light and poor weather light
- Heat insulating glass in side and rear windows
- Laminated safety glass windscreen, heat insulating
- Rear combination lamps with special signal pattern
- Rear fog light on one side, reversing light on both sides
- Surround lighting with welcome light
- Silver roof rails
- Two-tone horn

### Interior

- Bespoke Elegance decorative material set with inserts in ornamental wood ash in dashboard
- Aluminium front scuff plates
- Door and side trim panel with leatherette insert
- Driver's seat with manual adjustment of seat travel, height and backrest angle; thigh support longitudinally sliding
- Interior ambient lighting with 30 colour options
- Leather-wrapped, heated, multi-function steering wheel with shift paddles
- Chrome elements on the mirror switch and power window switches, door pulls; interior door handles in matte chrome

- Seat trim covers in ArtVelours
- Sports comfort seats in front
- 12-volt socket in centre console, in rear and in luggage compartment
- Auto-dimming rear-view mirror
- Carpet mats, front and rear
- Centre console with illuminated storage compartment with sliding cover and two drinks holders
- Comfort seats in front with manual height adjustment
- Flat luggage compartment floor
- Front centre armrest
- Mechanical rear seat release
- Power-assisted steering, speed sensitive
- Power-adjustable lumbar support in front seats
- Heated front seats with massage function
- Seven-seat versions: rear seat bench/backrest, split folding with centre armrest and two seats in third row of seats
- Five-seat versions: rear seat bench, split folding, longitudinally moveable and folding with load-through hatch (eHybrid only)
- Sun visors with illuminated vanity mirrors

### In-car entertainment and communications

- 12.9-inch infotainment display
- Two USB-C ports in the front, two USB-C charging sockets on the centre console in rear, charging capacity up to 45 W
- Eight speakers
- Digital Cockpit Pro – 10.25-inch high-resolution dash display screen with customisable menus and information
- Digital radio reception (DAB)
- Diversity antenna for FM reception
- E-sim card for online connectivity
- Inductive smartphone charging
- Navigation system
- Voice activation – spoken word commands for telephone and navigation system
- Wireless App-Connect

### Safety and security

- Proactive passenger protection system
- E-call emergency call service
- Three-point seat belts in front with seat belt pretensioners
- Three-point seat belts, outer rear with ECE label
- Alarm with interior protection

- Keyless Go central locking system
- Easy open and close – electric tailgate with virtual pedal activation
- Curtain and side airbags in front and rear, centre airbag
- Disc brakes front and rear
- Driver and front passenger airbag with front passenger airbag deactivation
- First-aid kit with warning triangle and safety vest
- ISOFIX anchors for child seats on outer rear seats and front passenger seat, compatible with i-Size
- Safety-optimised front head restraints
- Tailgate unlocking from outside
- Three or five rear head restraints
- Tyre pressure loss indicator
- Warning signal and warning light for front and rear seat belts not fastened

### Driver assistance

- Area view and rear-view camera
- Memory feature for Park Assist
- Park Assist Pro with Park Distance Control
- Adaptive cruise control (ACC)
- Driver attention monitor and driver alert system
- Driving profile selection
- Dynamic headlight range control with dynamic cornering light
- Dynamic road sign display
- Electronic parking brake with auto-hold function
- Front Assist – autonomous emergency braking with pedestrian and cyclist monitoring
- Front-wheel drive
- High Beam Assist, automatic sensing for switching between dipped and main beam
- Hill Start Assist
- Lane Assist, Traffic Jam Assist and Emergency Assist
- Lane change system Side Assist, Rear Traffic Alert and exit warning system
- Multi-function front-facing camera for distance control
- Oncoming vehicle braking when turning, including swerve support
- Start-stop system with battery regeneration (recuperation – energy recovery during braking)
- Charging cable mode 3, type 2/3, 16 A
- Charging cable mode 2, type 2 / G (10 A)

### Comfort and convenience

- Remote electrically foldable door mirrors, puddle lights and reverse-activated passenger door mirror
- Three-zone Air Care Climatronic air conditioning control panel

### Options

Full option information is available on the Volkswagen UK online configurator:

[https://www.volkswagen.co.uk/en/configurator.html/\\_app/31150](https://www.volkswagen.co.uk/en/configurator.html/_app/31150)

All prices listed are manufacturer's on-the-road recommended retail price (includes VAT, VED, delivery to Retailer, number plates and first registration fee). Volkswagen may change RRP's at any time (this includes where there are Government changes in regulation and/or legislation). Vehicle specification may vary as Volkswagen UK reviews the model range line-up throughout the year. Buyers are advised to clarify exact vehicle specification and price with a Volkswagen Retailer at the point of order.

All equipment details, prices (including 20 per cent VAT) and power specifications apply to the model range offered in the UK. Figures in this media pack are correct at the time of publication (April 2025).



# Standard equipment

## Tayron R-Line

[See the Volkswagen website for current price](#)

### Alloy wheels and suspension

- 20-inch Leeds black/grey diamond-turned alloy wheels
- Anti-theft wheel bolts
- 255/40 R20 tyres
- Tool kit and tyre mobility set: 12-volt compressor and tyre sealant

### Exterior

- R-Line sports style bumpers with chrome-trimmed air intake
- Silver roof rails
- LED headlamps with LED separate signature running light and dynamic cornering light
- Illuminated Volkswagen logo front and rear, with animation
- Laminated safety glass from B-pillar backwards, 90-per-cent tinted
- Automatic headlight control with LED daytime running light and coming home/leaving home feature
- Body-coloured exterior mirror housings and door handles
- Chrome mouldings on side windows
- Cornering light and poor weather light
- Heat-insulating glass in side and rear windows
- Laminated safety glass windscreen, heat-insulating
- Rear combination lamps with special signal pattern
- Rear fog light on one side, reversing light on both sides
- Surround lighting with welcome light
- Silver roof rails
- Two-tone horn

### Interior

- R-Line decorative material set
- Aluminium front scuff plates
- Black roof lining
- Brushed stainless steel pedals
- Heated front seats with massage function
- Door and side trim panel inserts in ArtVelours
- Leather-wrapped, heated, multi-function sports steering wheel with touch control and shift paddles

- Driver's seat with manual adjustment of seat travel, height and backrest angle; thigh support longitudinally sliding
- Interior ambient lighting with 30 colour options
- Chrome elements on the mirror switch and power window switches, door pulls; interior door handles in matte chrome
- Seat trim covers in ArtVelours
- Sports comfort seats in front
- 12-volt socket in centre console, in rear and in luggage compartment
- Auto-dimming rear-view mirror
- Carpet mats, front and rear
- Centre console with illuminated storage compartment with sliding cover and two drinks holders
- Flat luggage compartment floor
- Front centre armrest

### In-car entertainment and communications

- 12.9-inch infotainment display
- Two USB-C ports in the front, two USB-C charging sockets on the centre console in rear, charging capacity up to 45 W
- Eight speakers
- Digital Cockpit Pro – 10.25-inch high-resolution dash display screen with customisable menus and information
- Digital radio reception (DAB)
- Diversity antenna for FM reception
- E-sim card for online connectivity
- Inductive smartphone charging
- Navigation system
- Voice activation – spoken word commands for telephone and navigation system
- Wireless App-Connect

### Safety and security

- Integrated head restraints for front seats
- E-call emergency call service
- Three-point seat belts in front with seat belt pretensioners
- Three-point seat belts, outer rear with ECE label
- Alarm with interior protection
- Keyless Go central locking system
- Curtain and side airbags in front and rear, centre airbag

- Disc brakes front and rear
- Driver and front passenger airbag with front passenger airbag deactivation
- First-aid kit with warning triangle and safety vest
- ISOFIX anchors for child seats on outer rear seats and front passenger seat, compatible with i-Size
- Safety-optimised front head restraints
- Tailgate unlocking from outside
- Three or five rear head restraints
- Tyre pressure loss indicator
- Warning signal and warning light for front and rear seat belts not fastened

### Driver assistance

- Dynamic headlight range control, with dynamic cornering light
- Adaptive Chassis Control DCC Pro including driving mode selection (PHEV and 4MOTION only)
- 4MOTION all-wheel drive (where specified)
- Progressive steering (PHEV and 4MOTION only)
- Hill Start Assist and Hill Descent Control (4MOTION only)
- Adaptive cruise control (ACC)
- Driver attention monitor and driver alert system
- Driving profile selection
- Dynamic road sign display
- Electronic parking brake with auto-hold function
- Front Assist – autonomous emergency braking with pedestrian and cyclist monitoring
- Front-wheel drive
- High Beam Assist, automatic sensing for switching between dipped and main beam
- Hill Start Assist
- Lane change system Side Assist, Rear Traffic Alert and exit warning system
- Lane keeping system Lane Assist
- Multi-function front-facing camera for distance control
- Oncoming vehicle braking when turning, including swerve support
- Park Assist Plus with Park Distance Control
- Rear-view camera system
- Start-stop system with battery regeneration (recuperation – energy recovery during braking)
- Charging cable mode 3, type 2/3, 16 A
- Charging cable mode 2, type 2 / G (10 A)

### Comfort and convenience

- Remote electrically foldable door mirrors, puddle lights and reverse-activated passenger door mirror
- Three-zone Air Care Climatronic air conditioning control panel

### Options

Full option information is available on the Volkswagen UK online configurator:

[https://www.volkswagen.co.uk/en/configurator.html/\\_app/31150](https://www.volkswagen.co.uk/en/configurator.html/_app/31150)

All prices listed are manufacturer's on-the-road recommended retail price (includes VAT, VED, delivery to Retailer, number plates and first registration fee). Volkswagen may change RRP's at any time (this includes where there are Government changes in regulation and/or legislation). Vehicle specification may vary as Volkswagen UK reviews the model range line-up throughout the year. Buyers are advised to clarify exact vehicle specification and price with a Volkswagen Retailer at the point of order.

All equipment details, prices (including 20 per cent VAT) and power specifications apply to the model range offered in the UK. Figures in this media pack are correct at the time of publication (April 2025).



# Standard equipment

## Tayron R-Line Edition

[See the Volkswagen website for current price](#)

### Alloy wheels and suspension

- 20-inch York black diamond-turned alloy wheels
- Anti-theft wheel bolts
- 255/40 R20 tyres
- Tool kit and tyre mobility set: 12-volt compressor and tyre sealant

### Exterior

- R-Line sports style bumpers with chrome-trimmed air intake
- Silver roof rails
- LED headlamps with LED separate signature running light and dynamic cornering light
- Illuminated Volkswagen logo front and rear, with animation
- Laminated safety glass from B-pillar backwards, 90-per-cent tinted
- Automatic headlight control with LED daytime running light and coming home/leaving home feature
- Body-coloured exterior mirror housings and door handles
- Chrome mouldings on side windows
- Cornering light and poor weather light
- Heat-insulating glass in side and rear windows
- Laminated safety glass windscreen, heat-insulating
- Rear combination lamps with special signal pattern
- Rear fog light on one side, reversing light on both sides
- Surround lighting with welcome light
- Silver roof rails
- Two-tone horn

### Interior

- R-Line decorative material set
- Aluminium front scuff plates
- Black roof lining
- Brushed stainless steel pedals
- Heated front seats with massage function
- Door and side trim panel inserts in ArtVelours
- Leather-wrapped, heated, multi-function sports steering wheel with touch control and shift paddles
- Interior ambient lighting with 30 colour options

- Driver's seat with manual adjustment of seat travel, height and backrest angle; thigh support longitudinally sliding
- Chrome elements on the mirror switch and power window switches, door pulls; interior door handles in matte chrome
- Seat trim covers in ArtVelours
- Sports comfort seats in front
- 12-volt socket in centre console, in rear and in luggage compartment
- Auto-dimming rear-view mirror
- Carpet mats, front and rear
- Centre console with illuminated storage compartment with sliding cover and two drinks holders
- Flat luggage compartment floor
- Front centre armrest

### In-car entertainment and communications

- 12.9-inch infotainment display
- Two USB-C ports in the front, two USB-C charging sockets on the centre console in rear, charging capacity up to 45 W
- Eight speakers
- Digital Cockpit Pro – 10.25-inch high-resolution dash display screen with customisable menus and information
- Digital radio reception (DAB)
- Diversity antenna for FM reception
- E-sim card for online connectivity
- Inductive smartphone charging
- Navigation system
- Voice activation – spoken word commands for telephone and navigation system
- Wireless App-Connect

### Safety and security

- Integrated head restraints for front seats
- E-call emergency call service
- Three-point seat belts in front with seat belt pretensioners
- Three-point seat belts, outer rear with ECE label
- Alarm with interior protection
- Keyless Go central locking system
- Easy open and close – electric tailgate with virtual pedal activation
- Curtain and side airbags in front and rear, centre airbag
- Driver and front passenger airbag with front passenger airbag deactivation

- Disc brakes front and rear
- First-aid kit with warning triangle and safety vest
- ISOFIX anchors for child seats on outer rear seats and front passenger seat; compatible with i-Size
- Safety-optimised front head restraints
- Tailgate unlocking from outside
- Three or five rear head restraints
- Tyre pressure loss indicator
- Warning signal and warning light for front and rear seat belts not fastened

### Driver assistance

- Dynamic headlight range control, with dynamic cornering light
- Adaptive Chassis Control DCC Pro including driving mode selection (PHEV and 4MOTION only)
- 4MOTION all-wheel drive (where specified)
- Progressive steering (PHEV and 4MOTION only)
- Hill Start Assist and Hill Descent Control (4MOTION only)
- Adaptive cruise control (ACC)
- Driver attention monitor and driver alert system
- Driving profile selection
- Dynamic headlight range control
- Dynamic road sign display
- Electronic parking brake with auto-hold function
- Front Assist – autonomous emergency braking with pedestrian and cyclist monitoring
- Front-wheel drive
- High Beam Assist, automatic sensing for switching between dipped and main beam
- Hill Start Assist
- Lane change system Side Assist, Rear Traffic Alert and exit warning system
- Lane keeping system Lane Assist
- Multi-function front-facing camera for distance control
- Oncoming vehicle braking when turning, including swerve support
- Memory feature for Park Assist
- Park Assist Pro with Park Distance Control
- Rear-view camera system
- Start-stop system with battery regeneration (recuperation – energy recovery during braking)
- Charging cable mode 3, type 2/3, 16 A
- Charging cable mode 2, type 2 / G (10 A)

### Comfort and convenience

- Tilting and sliding panoramic sunroof with rear panoramic sunroof
- Remote electrically foldable door mirrors, puddle lights and reverse-activated passenger door mirror
- Three-zone Air Care Climatronic air conditioning control panel

### Options

Full option information is available on the Volkswagen UK online configurator:

[https://www.volkswagen.co.uk/en/configurator.html/\\_\\_\\_app/31150](https://www.volkswagen.co.uk/en/configurator.html/___app/31150)

All prices listed are manufacturer's on-the-road recommended retail price (includes VAT, VED, delivery to Retailer, number plates and first registration fee). Volkswagen may change RRP's at any time (this includes where there are Government changes in regulation and/or legislation). Vehicle specification may vary as Volkswagen UK reviews the model range line-up throughout the year. Buyers are advised to clarify exact vehicle specification and price with a Volkswagen Retailer at the point of order.

All equipment details, prices (including 20 per cent VAT) and power specifications apply to the model range offered in the UK. Figures in this media pack are correct at the time of publication (April 2025).



## Servicing and warranty

Volkswagen offers customers a choice of servicing regimes for the Tayron. They can choose fixed service or flexible service depending on how the car is likely to be driven and its general use.

The fixed service regime is recommended for vehicles that will cover fewer than 10,000 miles in 12 months and if the vehicle is likely to be used in the following way:

- Predominantly urban driving, short journeys with frequent cold starts
- Activities regularly producing high engine loading, for example frequent hill climbs, driving with vehicle fully loaded and towing
- Driving with high rpm, hard acceleration and heavy braking. In this case, the vehicle will be serviced at regular intervals, at every 10,000 miles or every 12 months

Flexible service is recommended for vehicles with a daily mileage of more than 25 miles, where the vehicle is driven regularly and on mainly long-distance journeys. The vehicle should be mainly driven at a constant speed with minimum vehicle and engine loading, minimal towing and driven in an economical manner.

In this case, the on-board computer tells the driver, via a dashboard display, when the vehicle needs a service.

A range of engine sensors electronically monitors the vehicle's oil temperature, oil pressure, oil level and brake pad wear to establish when a service is needed. With the flexible regime, the vehicle can typically cover up to about 18,600 miles or 24 months (whichever is sooner) between oil changes. An inspection service is typically due in the third year of ownership or at 40,000 miles, and thereafter every second year for vehicles with an annual mileage of about 10,000 miles.

Customers can choose between fixed and flexible at pre-delivery inspection (PDI). It is possible to change from one to another during the vehicle's lifetime, but this can only be done when a full inspection service is due.

### Warranty

The Tayron has a three-year (first- and second-year manufacturer-operated, third-year Retailer-operated)/60,000-mile mechanical warranty. In addition, it comes with a 12-year body protection guarantee, three-year paint warranty and a year's membership of Volkswagen Assistance, which includes European breakdown cover. The latter can be extended at minimal cost to the customer.



# VOLKSWAGEN STRATEGY



## ACCELERATE

Introduced in 2021, the ambitious ACCELERATE brand strategy describes Volkswagen's transformation into a tech company via the development of key activities such as e-mobility and digitalisation, alongside the use of new business models and autonomous driving. The Volkswagen brand is investing around 18 billion euros in e-mobility, hybridisation and digitalisation by 2026. Volkswagen is changing, from the ground up, and via ACCELERATE it is giving the digitalisation of the brand a further major boost.

## Way to Zero

Volkswagen intends to be net carbon neutral by 2050 at the latest. An interim milestone is the targeted 40 per cent reduction in CO<sub>2</sub> emissions per vehicle in Europe by 2030. As well as accelerating the transition to e-mobility, the production (including supply chain) and operation of electric cars is being made net carbon neutral. Added to this is the systematic recycling of the high-voltage batteries from old electric vehicles. Volkswagen is taking a holistic approach to decarbonisation: from production through service life to recycling. It is also the first car maker to support the expansion of renewable energies on an industrial scale.



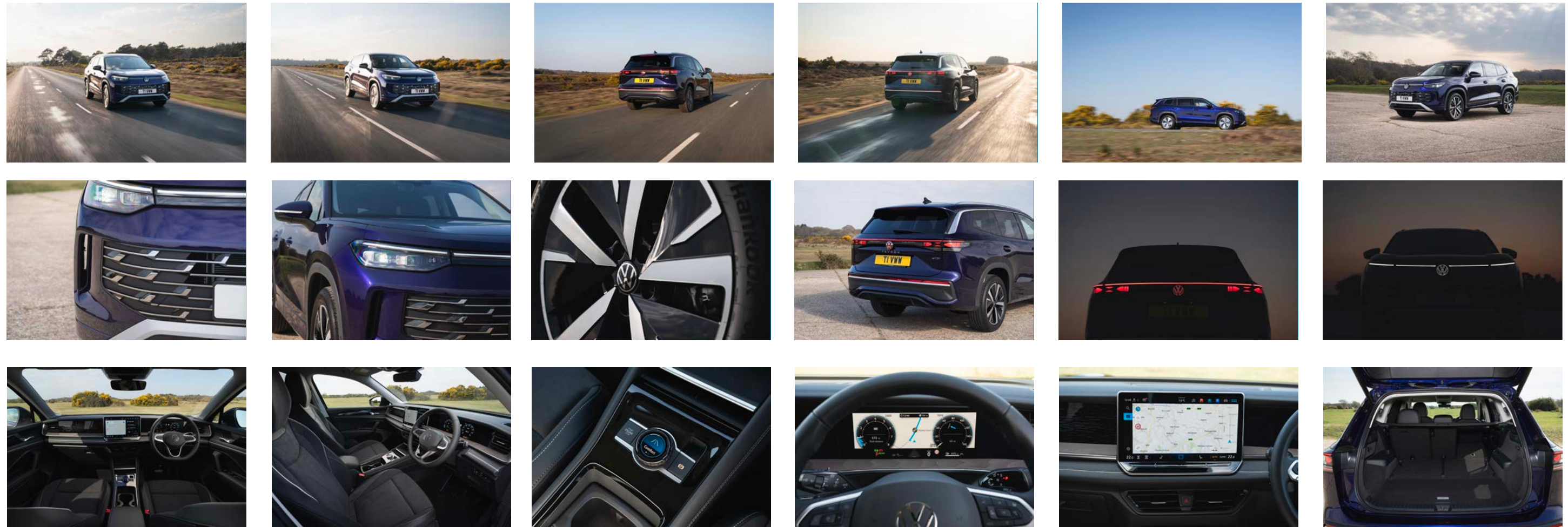
# MEDIA GALLERY



Download all images, videos and an unformatted plain text version of this press pack [here](#).

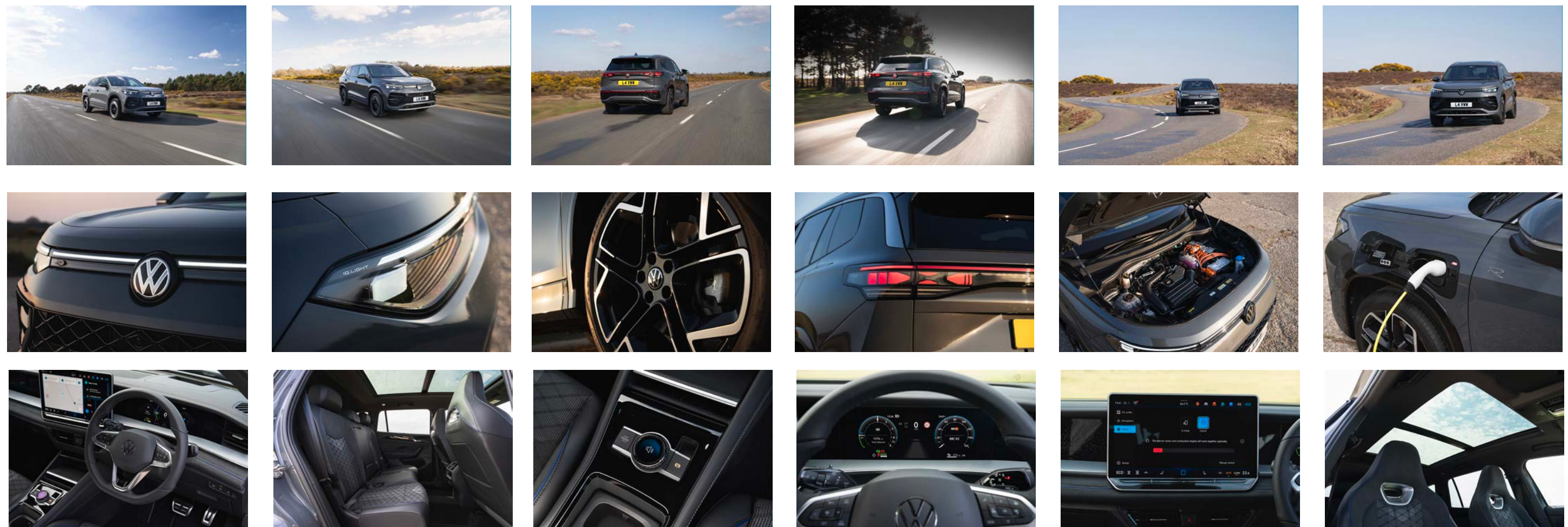
### Tayron TSI

<https://www.vwpress.co.uk/models/new-tayron>



### Tayron eHybrid

<https://www.vwpress.co.uk/models/new-tayron>





[www.vwpress.co.uk](http://www.vwpress.co.uk)

Follow us:



@Volkswagen UK



@volkswagen\_uk



@volkswagen\_uk

April 2025